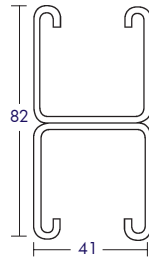


CHANNEL & SUPPORT SYSTEMS

Back To Back Deep Channel

Ref.	Length	Finish
UC4182/3	3m	Galvanized to BS EN10346
UC4182/6	6m	Galvanized to BS EN10346
UC418S/3	3m	Galvanized to BS EN10346 (Slotted)
UC418S/6	6m	Galvanized to BS EN10346 (Slotted)
GAUC4182/3	3m	Hot Dipped to BS EN ISO 1461
GAUC4182/6	6m	Hot Dipped to BS EN ISO 1461

Span m	0.50	0.75	1.00	1.50	2.00	2.50	3.00
Deflection at load*mm	0.50	1.10	2.00	4.60	8.20	12.80	18.40
Safe UDL **kg	2372	1579	1186	784	583	462	380

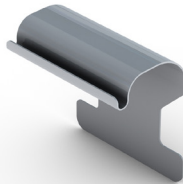


(Solid Channel in stock, slotted on request)

Tray to Channel Klip

Ref. CHTR 25 (KLMR)

Ref. CHTR 50 (KLHR)



Basket to Channel clip

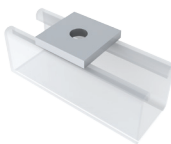
Ref. UFC41M



GA Standard Finish on Channel Brackets

Square Plate

Ref.	Size
325AJ03	6mm
325AJ05	8mm
325AJ07	10mm
325AJ10	12mm



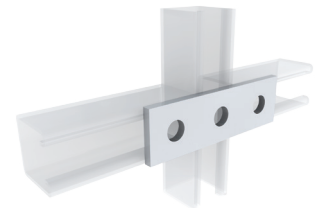
Two Hole Plate

Ref.325AD11



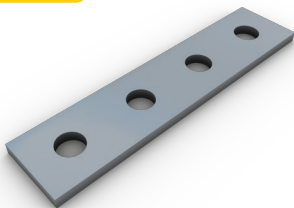
Three Hole Plate

Ref.325AC11



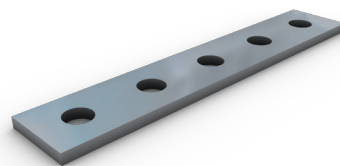
Four Hole Plate

Ref.325AC13



Five Hole Plate

Ref.325AY10



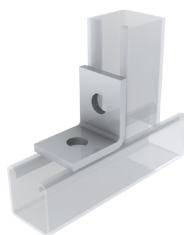
L Bracket

Ref.325AG10



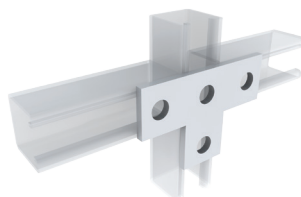
Right Angle Bracket

Ref.325AS10



T Bracket

Ref.325AF13



Right Angle Bracket

Ref.325AC09

